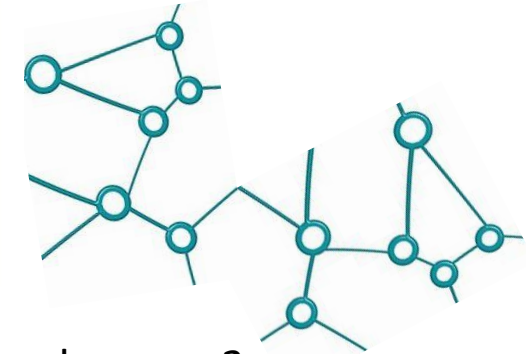


## Overview

The Dorset Innovation Hub (DIH) is one of four Health Foundation Adoption of innovation Hubs. The DIH is a partnership of all Dorset health and care organisations (see next slide) that **provide expertise to spread and adopt innovation across** Dorset and throughout Wessex

Funded for two and a half years to establish and **imbed a sustainable innovation impact and culture in Dorset** (funding ends April 2024).

In this overview, we outline how the Dorset Innovation Hub (DIH) works within the system to develop a sustainable innovation culture and impact in Dorset. This is as a legacy of the Health Foundation funding. Life continues to not be normal at the moment, we are working in an agile way to ensure the Dorset Innovation Hub is **relevant and legitimate** and continues with buy in from all partners with the **energy and enthusiasm** to meet the evolving changes in Dorset.



- How the hub works *page 2*
- System partners *page 3*
- What we do *page 4*
- Defining health and care innovation *page 5*
- Developing the impact – communications *page 6* and partner organisations *page 7*
- Impact, learning and achievements *page 8 and 9*
- Examples of proven innovation and implementation national and local *page 10 and 11*
- Key priorities for the next six months *page 12*



# How the Dorset Innovation Hub works



- Fully integrated into Dorset ICS, enabling innovation to connect with the detail of our system priorities and meeting the needs of all people in Dorset. The DIH is one of the vehicles to deliver the four ICS priorities:
  - improve outcomes in population health and healthcare
  - tackle inequalities in outcomes, experience and access priorities and operational planning guidance
  - enhance productivity and value for money
  - support broader social and economic development

- People with lived experience, our staff and our wider population are central to the success of our Hub.
- Focus on “Deploy” - adapt, adopt and spread proven innovation recognising we work as a system within complementary threads:
  - **Discovery**, e.g. clinical research / inventive innovation
  - **Develop**, e.g. inventive innovation / clinical research / QI
  - **Deploy**, e.g. spread and adopt innovation / QI / clinical audit
- Established collaborative working with our colleagues in quality to ensure effective working with the complementary golden threads of quality to ensure improvements for our people. This includes clinical research, inventive innovation, QI and clinical audit.





**AECU  
University  
College**



**NHS Dorset  
County  
Hospital**



**Dorset  
Council**



**NIHR Applied  
Research  
Collaboration  
Wessex (ARC  
Wessex)**



**NHS Dorset**



**Dorset Local  
Enterprise  
Partnership**



**NHS  
University  
Hospitals  
Dorset**



**Bournemouth,  
Christchurch  
and Poole  
Council**



**Wessex  
Academic  
Health  
Science  
Network**

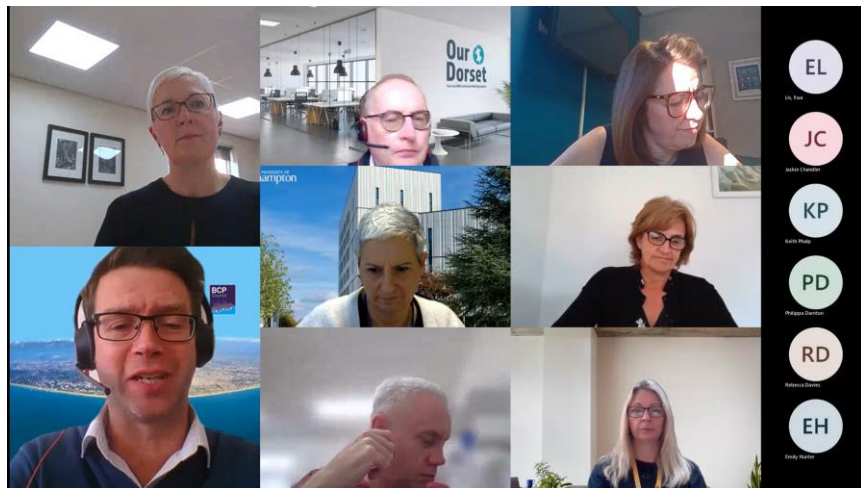


**NHS  
Dorset  
Healthcare  
University**



**Bournemouth  
University**

# What we do



Programme Group

**Prioritised balanced programme.** Our work programme has been developed to ensure our work is focused on improving people's care, outcomes or experience. This includes:

- **Local priority call 2021/22 – what is the need**, e.g. malnutrition in aging people
- **Local priority call 2022/23** - levelling up and spread of excellence (initiating Sept 2022)
- **National must do** - Medtech Funding Mandate (MTFM), e.g. Placental Growth Factor
- **National should do** – INHIP (Innovation national health inequalities Rapid Uptake Product (RUP))
- **Doing now and need to spread**
- **Would like to do** – inc. inventive

**Programme group** - Representatives from all partner organisations who oversee the development of the programme, receive project updates, risks, issues and mitigating factors and quarterly performance reports.

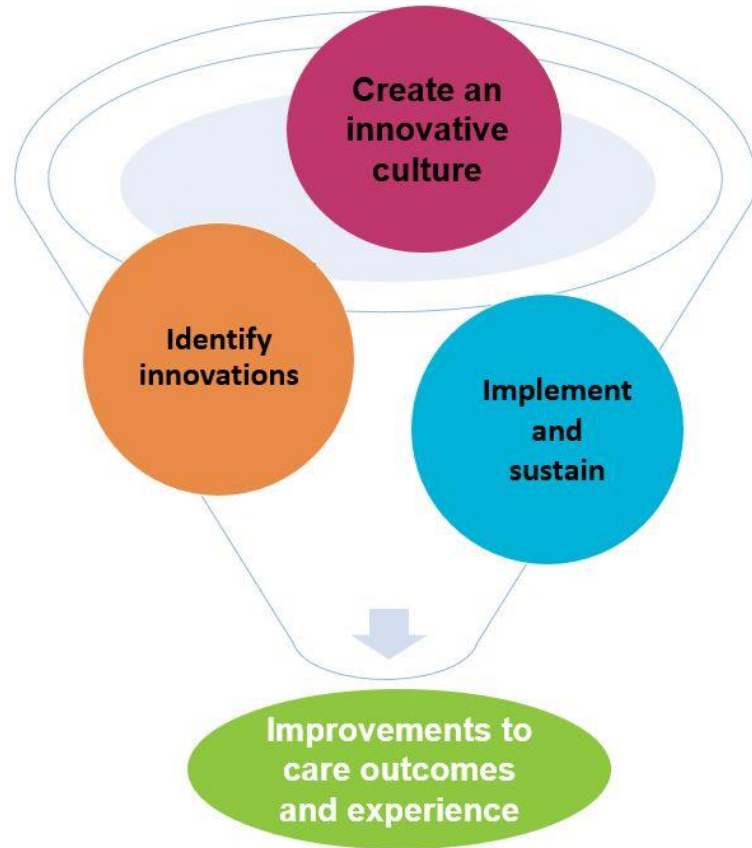
- **Innovation core team** - are small but perfectly formed!\* and:
  - Provide facilitative innovation advice and support (priority projects) working with the project sponsor and clinical teams
  - Support work towards the strategy inc. e.g. education programme, governance
  - Provide practical support including learning from experience



Core team



# Defining health and care innovation



“Innovation is often talked about as the way in which we can meet these challenges and take these opportunities, but there has sometimes been a lack of clarity around what innovation means and how to do it well”<sup>1</sup>.

We utilise the Accelerated Access Collaborative (AAC), NHSE, Care Quality Commission (CQC), NICE and partners paper ‘Enabling innovation and adoption in health and social care - Developing a shared view’ (Feb 2021) six principles and definition of innovation:

“the **term innovation** to cover both **invention** (creating new ideas, products, services or models of care) and **adoption** (implementing what has worked elsewhere)”.

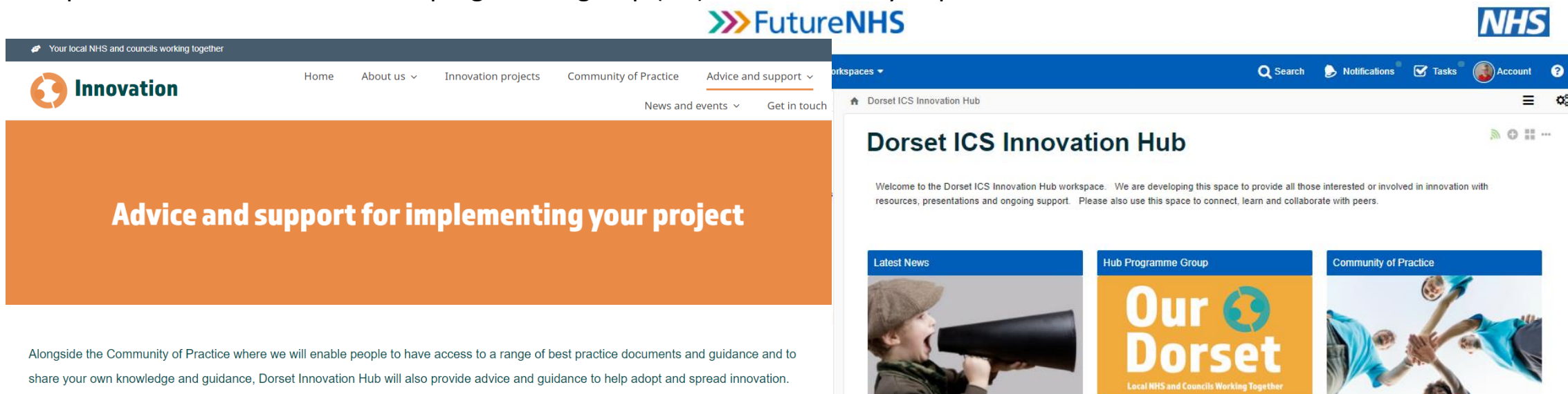


# Developing the impact - communications

Underpinning our Communication Strategy, we have:

Developed our Dorset website (public facing front door): [Innovation – Our Dorset ICS Innovation](#)

- Key information inc: about us, innovation projects, resources, training, advice and support
- FutureNHS platform. 3 levels: core team; programme group (PG) and community of practice



The image shows two overlapping screenshots. The top one is the 'Innovation' website, featuring a navigation menu with 'Home', 'About us', 'Innovation projects', 'Community of Practice', and 'Advice and support'. A large orange banner reads 'Advice and support for implementing your project'. Below it, text states: 'Alongside the Community of Practice where we will enable people to have access to a range of best practice documents and guidance and to share your own knowledge and guidance, Dorset Innovation Hub will also provide advice and guidance to help adopt and spread innovation.' The bottom screenshot is a 'FutureNHS' workspace for the 'Dorset ICS Innovation Hub'. It includes a search bar, notifications, tasks, and account icons. The main content area has a heading 'Dorset ICS Innovation Hub' and a welcome message. Below this are several tiles: 'Latest News' (child with megaphone), 'Hub Programme Group' (Our Dorset logo), 'Community of Practice' (group of people), 'Core Documents & Reports' (hand writing), 'Hub Core Team' (colored pencils), 'Case Studies and Projects' (eye graphic), 'Training' (meeting), 'Evaluating our hub' (alphabet blocks), and 'Development Space' (construction site).

### Partners

 AECC University College	 NHS Dorset County Hospital
 Bournemouth, Christchurch and Poole Council	 NHS Dorset HealthCare
 Bournemouth University	 NHS University Hospitals Dorset
 Dorset Council	 NIHR Applied Research Collaborative Wessex
 NHS Dorset Clinical Commissioning Group	 Wessex Academic Health Science Network



Hosted by NIHR | DorsetMedTech | BU | Dorset HealthCare | IMPACT VENTURES

**The North-South MedTech Summit**

AI - MedTech - HealthTech  
Surgery 4.0 - Big Data - Robotics - IoT - AR/VR  
Friday 30th November 2021  
8:30 am - 2:00 pm

Join our virtual event featuring key speakers, exhibitors and partners  
Each registered attendee will receive 3 Free rapid connections to potential partners, clients or funders  
[www.northsouthmedtechsummit.co.uk](http://www.northsouthmedtechsummit.co.uk)  
[summit@nhs.uk](mailto:summit@nhs.uk)

**Sign up to the North-South Medtech Summit**  
3 November 2021



**Beneficial Changes Network – Annual Improvements Submission**  
10 September 2021



A grid of eight project tiles, each with a blue header and a representative image:

- Latest News**: Child with megaphone
- Hub Programme Group**: Our Dorset logo
- Community of Practice**: Group of people
- Core Documents & Reports**: Hand writing on a document
- Hub Core Team**: Colored pencils
- Case Studies and Projects**: Eye graphic
- Training**: Meeting
- Evaluating our hub**: Alphabet blocks spelling 'EVALUATE'
- Development Space**: Construction site with 'UNDER CONSTRUCTION' text

# Developing the impact – Partner Organisations

**Key points** We work as a system team with staff from partner organisations working with us to take forward projects (in-kind funding) and imbed innovation in their organisation. We call this 'developing the impact'.

- **Evolving approach moves to focus on imbedding innovation within partners organisations with key questions including:**
  - Who supports innovation?
  - Links and involvement with DIH?
  - Resources available incl. partner platform,
  - Raising awareness and support available
  - Case studies and impact reports
  - Spreading the word and comms links
- **Developing the understanding within partner organisations, increasing involvement and awareness, developing the impact and building the networks across the Dorset system**

# Impact, learning and achievements

Building on our first update report which outlined the framework and approach of the DIH, the following key achievements, impact and learning during (Feb to July) include:



- Ensuring Dorset Innovation Hub **relevance, legitimacy, energy, enthusiasm** continues with the evolving changes in Dorset including move to NHS Dorset and priority workstreams.
- Workstreams moved to **business as usual** inc. communication, Community of Practice, horizon scanning and triage.
- Representation of public and patients (citizens) by the **Voluntary Community Sector Assembly** within the DIH.
- **NHSE's IRLS (Innovation, Research and Life Sciences) team visit to Wessex AHSN.** Presented the collaborative system work of the DIH: [Key Reports & Documents – Innovation \(ourdorset.org.uk\)](https://ourdorset.org.uk)
- **Core team development day with Innovation Unit.** Incl. getting to know one another, our visions values and priorities, innovation adoption, horizon scanning, fidelity and flexibility, stakeholder mapping and pitch.
- **Community of practice** revised programme launched, including themed discussion and questions to friendly panel of experts.
- **Developed an innovation education programme** - employs a dosing matrix to help build knowledge from basic awareness to in depth skills.



# Impact, Learning and achievements continued/...

- Developed processes that **enable health and care innovation to connect with the detail of our system priorities**, meeting the needs of all public and patients (citizens).
- Developed process for **integral public and patient involvement (PPIE)**. Developed role description and advert live end July.
- Development of clinical lead role Appoint replacement **clinical Lead**. Advert live end July 2022.
- Approved system wide use of the AAC **definition of innovation, enabling clarity and support** for those that are involved in innovation. Work to being taken forward to cascade and develop impact - through partner organisations / public website.
- **People focused benefits realisation**, inc. outcomes, experience, length of stay and access. BR included in project initiation document including key performance indicators.
- Published first two editions of innovation newsletter: [Newsletters – Innovation \(ourdorset.org.uk\)](https://www.ourdorset.org.uk/newsletters-innovation)
- **MedTech Funding Mandate (MTFM)**. Developed processes including, standard operating procedure, benefits realisation template. Developed sustainability processes, process to assess against NICE guidance, undertake clinical audit and template case study which is being piloted.
- MTFM funding agreed with **NHS Dorset £1.2 million**

**CareQuality Commission** **ACCELERATED ACCESS COLLABORATIVE** **NHS** **Innovation**

## INNOVATE

Dorset ICS Innovation Hub Newsletter EDITION 1: JUNE 2022

### Welcome to the first edition of our Dorset Innovation Hub newsletter!

We are delighted to publish the first edition of our online newsletter. Designed to be of interest to everyone working in health and social care within Dorset, we hope that you find this an accessible way of finding out about the latest news on innovation across Dorset and the help that is available to our innovators. Our newsletter also provides access to key resources, information on training opportunities and answers to some frequently asked questions.

**What do we do?**  
The Dorset Innovation Hub (the Hub) is one of four hubs funded by the Health Foundation (HF) and is made up of partner organisations from across the Dorset Integrated Care System (ICS).  
The hub draws on the respective partner organisations (details on page 5) experience and expertise and aims to support the sustainable adoption of locally prioritised proven innovations that can improve health and social care outcomes, equality of care and accessibility across Dorset.  
Ultimately, we work with you to support your innovation project, be it medicines, technology, pathways, diagnostics, digital, and innovative ways of working (details on page 5).  
If you are interested in hearing more, please do join our growing FutureNHS community of practice (details on page 6).  
**Alan Betts, Chair - Dorset Innovation Hub Programme Group**  
**Sarah Chessell, Lead for the Dorset Innovation Hub**

### In This Issue

- Defining innovation
- Training sessions
- NHS Innovator Accelerator
- Med Tech Funding Mandate
- Support for Innovators
- Twitter news
- Community of Practice
- Contact details

## Project Definitions

Home / Project Definitions

Within the health and care setting, data collection exercises can take several different forms depending on focus and purpose. These may include; innovation projects, research projects, clinical audit, service evaluations and QI projects. Sometimes the distinction between these can be difficult to navigate and the activities will be overseen and supported by different teams/departments. In order to help clarify these distinctions, we have created the following simple guide.

- Innovation Projects**
- Research Projects**
- Clinical Audit**
- Service Evaluation**
- QI Projects**

# National example of a proven innovation and implementation

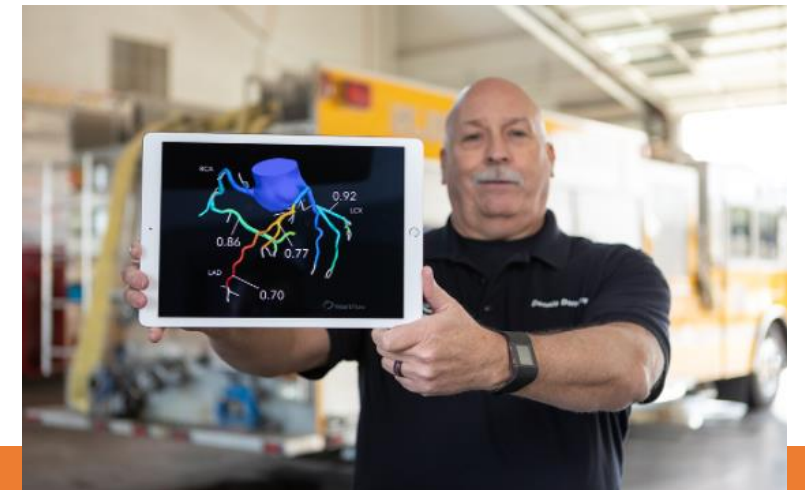
**Description:** HeartFlow FFRCT estimates fractional flow reserve from coronary CT angiography (CCTA) for patients with stable, recent-onset chest pain, therefore avoiding invasive investigation and treatment.

## Patient benefit (as stated by NICE):

- Replaces need for an invasive procedure in a specialist cardiology procedure suite.
- Reduced length of stay.
- Reduced hospital visits as multiple diagnostic tests such as exercise tests and stress tests are not required.
- Faster diagnosis.
- Reduced waiting times for patients waiting for a procedure in the specialist cardiology procedure suite.

## Implementation in Dorset:

- Mandated by NHS England from 1st April 2021
- Poole and Bournemouth Hospital sites early adopters (pre-mandate)
- Dorset County Hospital assessing and moving to implementation



# Local example of proven innovation and implementation

**Description:** Dorset Covid Oximetry at home (CO@H) model is a primary care led service, providing a system wide, reactive, and proactive model. Daily on boarding of patients from all GP settings, urgent care and ED into a single telehealth hub, located within Dorset Health Care, provides Dorset with the first system wide coordinated response to caring for people with Covid, promoting self monitoring and escalation quickly on deterioration.

## Patient benefit:

- CO@H team identifying deteriorating patients and improving outcomes.
- Delivery across Dorset demonstrated immediate benefits during COVID-19, supporting clinicians to remotely monitor their patients effectively and efficiently.
- Dorset fast adopter and actively led and contributed to regional and national forums, sharing insights, developing resources for benefit of the wider NHS.

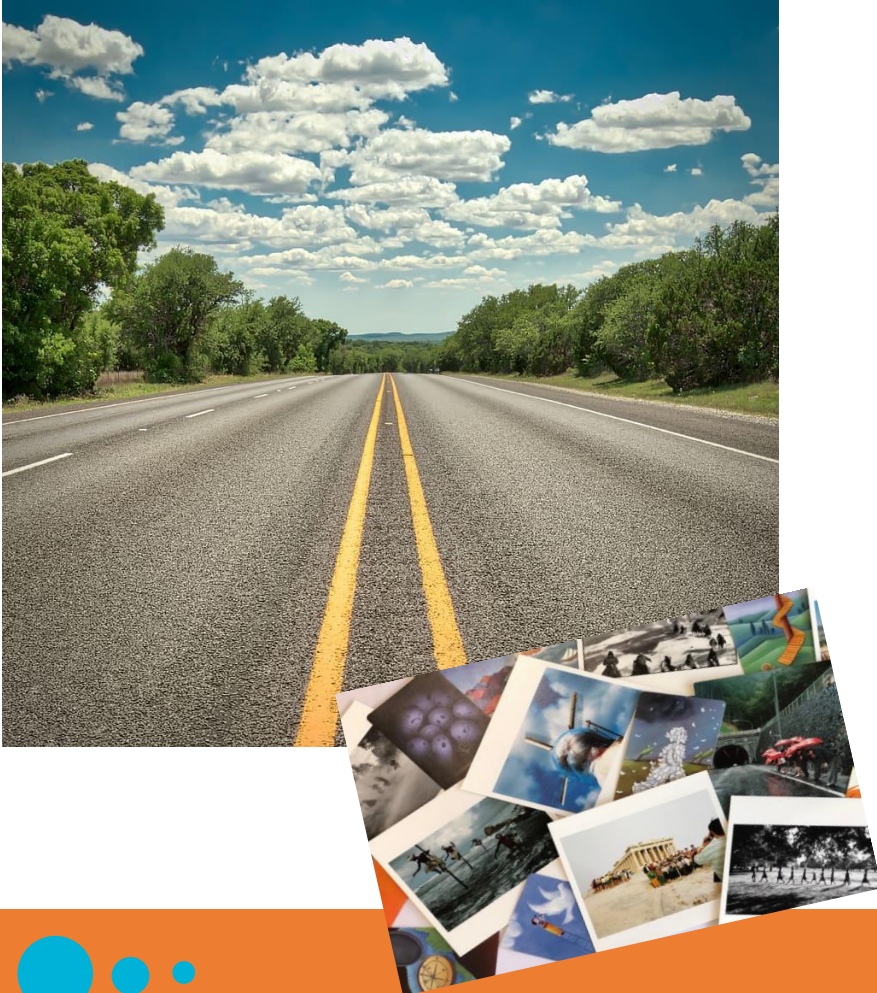


## Implementation in Dorset:

- CO@H model accessible to all 18 primary care networks (PCNs) and the three acute trusts within Dorset.
- Expected that, remote monitoring and digitally enabled pathways will be of a huge benefit to Dorset's population to support individuals living with long-term conditions beyond Covid and will be a fundamental component of future care delivery models soon, making inhealthcare a sustainable and adaptable innovative solution.



# Key priorities for next 6 months



- Further develop the **sustainability** of innovation in Dorset (developing the understanding within partner organisations, increasing involvement and awareness, developing the impact and building the networks across the Dorset system)
- Partner organisations **develop Innovation platforms** (intranet)
- **Innovation education programme**. Further development to finalise phase 1
- **Work programme 2022/23** – Levelling up and spread of excellence open call
- Further develop **community of practice** in order to support growth of this domain
- Development of DIH Summit (**showcase event**) Spring 2023
- **Evaluation** workstream inc. dimensions of complexity
- Appoint replacement **clinical Lead DIH**
- **Appoint PPIE reps**
- **MedTech Funding Mandate products 2021/22 and 2022/23** – continue review and implementation working with clinical and operational teams
- **Benefits realisations** – pilot template

