

INNOVATE



Dorset ICS Innovation Hub Newsletter

EDITION 3: DECEMBER 2022

Welcome to the December 2022 edition of the Dorset Innovation Hub newsletter.

Its often helpful to take a moment, pause and reflect on the impact and value of what you are doing. To evaluate, what has worked well, what has been achieved and what would be better if...

The Dorset Innovation Hub has a clear remit working with Dorset's NHS organisations, councils, public services, and voluntary and community partners to deliver implementation of prioritised proven innovation within Dorset. The value at the heart of the what we do is system working that benefits those who use Dorset health and care services. Reflecting on the impact, it is made possible by the unity, drive and consistent action of our partners.

Life's a journey, and 'what looks like success is often just patience' (Sabah Ismail, 2021). Our journey continues in the understanding that we have planted the seed, are taking consistent action and have faith and patience to allow the benefits.

In this our third newsletter, we invite you to read updates on our journey to date including the malnutrition in ageing project (page 2), evaluation in innovation adoption (page 3), and an opportunity to have your say on how ready is your organisation when it comes to adopting innovations? (page 6). We hope you enjoy reading these updates on our journey to date.

Sarah Chessell, Lead - Dorset Innovation Hub



"Creativity is thinking up new things. Innovation is doing new things."

Theodore Levitt



In This Issue

- Malnutrition in Ageing People Project
- Evaluation in Innovation Adoption
- Blog ~ Local Implementation of the Med Tech Funding Mandate
- Fundamentals of Innovation Adoption Training
- Life Sciences in the Central South Report
- Attitudes Towards Innovation Survey
- DIH Summit & events

Twitter news

Sarah
@ChessellSarah

Informative & inspiring visit to @aecc this afternoon. Thank u @ProfLesleyHaig & @claire_nadaf for taking time out to highlight your work transforming lives through health sciences. Such a warm, open, inspiring team. Delighted 2 b actively working with u #DorsetInnovationHub



Sarah
@ChessellSarah

#UKMAW2022 aims 2 raise awareness of preventable malnutrition in older people - starting conversations sooner.

Preventable malnutrition is recognised #Dorset priority & #DorsetInnovationHub are proud 2 be part of team scoping & delivering actions to help those at risk



Sandra Courtiour
@SCourtior

Pleased to share the #dorsetinnovationhub case study of the implementation journey @UHD_NHS for placental growth factor (PLGF)-based testing. Great example of teams working together to deliver med tech funding mandate products to service users. ourdorset.org.uk/innovation/pro...



Sarah
@ChessellSarah

On this #WorldValuesDay2022, the value at the heart of #dorsetinnovationhub is #systemworking that benefits those who use #Dorset #healthandcare services. Our values unite & drive us & it's a pleasure working with the truly amazing innovative #Dorset partners #WorldValuesDay2022



Local Priority Innovation Adoption Project

Malnutrition in Ageing People



One of the local priority projects in the Dorset Innovation Hub (DIH) work programme, is focused on the prevention of malnutrition in ageing people. It is estimated that nationally, malnutrition costs the NHS £20 billion; this figure rising when the care sector is included. It is a problem of particular importance in Dorset as the demographics of the county suggest a higher proportion of elderly residents, together with the difficulties associated with more rural and isolated communities; all of which is amplified by the current cost of living crisis.

A study undertaken in Purbeck in 2017 found that 27% of people screened were suffering from the effects of malnutrition. The effects of malnutrition are wide ranging and include; fatigue and lethargy, reduced ability to fight infection, loss of mobility, falls, and heart failure. There is also the social and emotional loss to consider as the act of sharing a meal with others is an important social and emotional act.

Malnutrition, however, is a complex and complicated issue, and one which requires a collaborative approach. To support this project a Malnutrition Steering Group (MSG) has been established, chaired by Dr Andrew Dean (Dorset Healthcare), and contains membership from healthcare providers (acute and community), the voluntary sector, local authority, and emergency services.

On 16 November 2022, we were delighted that members of the MSG, together with DIH core team and programme group members, were able to come together to work on identifying the need in conjunction with opportunity areas. The day was facilitated by the Innovation Unit, and provided a unique platform for cross-professional networking and idea generation. The day concluded with a set of robust actions to take forwards, and we look forward to providing further updates on this project soon.

If you are interested in the topic area and would like to join the MSG, please email the DIH at dorsetinnovationhub@uhd.nhs.uk.



Evaluation in Innovation Adoption

The essence of innovation adoption is implementing 'something new' that has a body of evidence to prove that it is safe, effective, and linked with beneficial outcomes; with the aim of realising these beneficial outcomes in the local context. However, in reality it is not that simple due to inherent challenges with innovation adoption, such as;

- Differences in the local demographic. Does the local population differ in a key characteristic to that in which the innovation was tested?
- Differences in local systems and processes. Do established local processes present potential barriers to successful adoption?
- Human aspects. What are the thoughts and views of key stakeholders on the innovation and how receptive is the environment to change?

Thus, a key component in any innovation adoption project is evaluation. Not only is evaluation an integral part of accountability within a project, but it also enables the identification of unexpected negative impacts and contributes to the knowledge base for the innovation.

Evaluation planning should be part of the project set-up process, involving all key stakeholders. Key questions to be asked include:

- What question(s) need answering?
- What data is needed to be able to answer the question(s)?
- What baseline data is needed as a comparator?
- How will the data be collected and analysed?
- What resources will be needed to complete the evaluation?

Evaluation is built in as an integral part of the adoption process for innovations associated with the Med Tech Funding Mandate, and this is currently in progress locally for placental growth factor (PLGF)-based testing. To note, the evaluation for Med Techs is supported by NICE by the provision of resource impact templates.

Further resources and reading

Evaluation Works Toolkit: <https://nhsevaluationtoolkit.net/>

Evaluation examples: [Wessex AHSN Innovation Insights Library](#)
[Resource impact of NICE guidance](#)



Twitter news



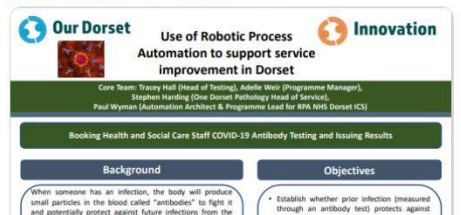
So pleased to welcome @claire_nadaf from @AECCUniversityC to the #DorsetInnovationHub core team. Claire fabulous to be working with you and your drive, commitment and passion is immediately evident 😊👍 #developingtheimpact #adoptioninnovation #systemworking #Fridaysmile



#DorsetInnovationHub would like to use World Hospice & Palliative Care Day to say #thankyou to the palliative care teams in #Dorset for the amazing work they do. Privileged to have been involved in conversations on service developments, exciting times ahead.



Interested in a real-world example of how automation can help improve #NHS processes? Look at #DorsetInnovationHub case study of how teams worked together across #Dorset to find solutions to challenges posed by #covid antibody testing for staff. ourdorset.org.uk/innovation/pro...



Thank u @Robert_I_Hull for an insightful session on need identification & horizon scanning. Love the energy in the room, & key realisation regarding importance of truly understanding the need before searching for solutions. #DorsetInnovationHub #fundamentals



Blog ~ Local implementation of the Med Tech Funding Mandate

What is the Med Tech Funding Mandate?

The MedTech Funding Mandate (MTFM) is an NHS England programme to encourage and support Trusts to consider and implement selected NICE-approved cost-saving devices, diagnostics, and digital products more quickly.

The policy launched on 1 April 2021. After the first year of the new policy, new guidance was published for 2022/23 and currently 11 new technologies across different clinical areas are being supported.

The policy supports new technologies that are effective and improve patient outcomes and are cost-saving within three years, demonstrated through positive NICE guidance and modelling, and are affordable to the NHS.

MTFM implementation and funding in Dorset

As the policy name suggests, NHS commissioners and providers are mandated to agree local funding arrangements for the implementation of MTFM technologies. The AHSN Network has responsibility for delivering the MTFM policy nationally and working with colleagues at Wessex AHSN we at the Dorset Innovation Hub facilitate the implementation of the supported technologies locally.

When the policy was published NHS Dorset agreed that sufficient funding would be set aside to cover the implementation of all 11 MTFM technologies, based on likely usage estimates from clinical teams, where known, or Dorset population-level estimates generated by completing a NICE resource impact assessment for each product.

Implementation process

The 11 MTFM technologies are now at different stages – some have been implemented and others are still being considered – but the process is basically the same for them all.

The first step is to establish if a particular MTFM technology is applicable to any of the Dorset Trusts, for example gammaCore, a vagus nerve stimulator for treating cluster headaches is applicable only to the Dorset Headache Service at UHD, whereas the PIGF test for pre-eclampsia is applicable at UHD and DCH.

We then identify the relevant clinical team(s) and engage with them to inform them about the MTFM policy, the technology in question, and confirm their interest in considering and implementing the technology. We then work with the appointed clinical lead to establish a project team, usually consisting of clinical, management, procurement, finance, and other relevant stakeholders (e.g., IT) to review the MTFM/NICE evidence base and supporting documents to decide whether to implement the technology.

If the decision is yes, we then work with the project team to develop a Project Initiation Document (based on a generic template) and implementation plan, and support them to implement the technology, e.g., with approvals, liaising with IT, IG etc and training from suppliers, with additional support from WAHSN (regional link with national MTFM leads).

Continued on page 5



A key task early on in an implementation project is to complete a NICE resource impact assessment for the technology, based on Trust estimates (as opposed to Dorset-level numbers), and inform NHS Dorset of the funding requirement.

Links with NICE guidance and compliance

To be compliant with the MTFM policy, NHSE expects eligible patients to be able to access the technologies and suggests their use by a Trust can be used as evidence by the Care Quality Commission (CQC) that it is meeting its regulatory requirements. All MTFM technologies are supported by NICE guidance and Trusts are required to implement them where clinically appropriate. But for some, such as Greenlight, a procedure for treating benign prostatic hyperplasia, alternative procedures are already being used. In such cases, to comply with the MTFM policy we must document the reason(s) for non-adoption of the MTFM technology

Next steps: benefits realisation

We are now working on a benefits realisation programme for each of the implemented MTFM technologies, to ensure that the 'real-world' benefits match MTFM/NICE expectations, results from which can be used to inform future decisions about continuing use of a technology after MTFM funding by NHS Dorset ends.

Derek Kelly – Programme Manager Dorset Innovation Hub



Training Fundamentals of Innovation Adoption

On the 2 November, the Dorset Innovation Hub were delighted to be able to run their Fundamentals of Innovation Adoption training face-to-face for the first time. It was fantastic to meet a broad range of people from across the county, as well as colleagues from the wider Wessex region.

During the day we covered topics including 'what is a healthcare innovation', identifying the need, understanding innovations & adopters, engaging stakeholders, and evaluation essentials. Each module being linked together by a case study. Some of the feedback from attendees included:

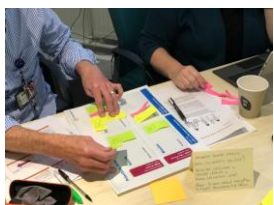
"Well planned and presented. Enjoyed opportunity to have face to face teaching, discussions and networking."

"I enjoyed being able to hear real examples of how the techniques might be used."

Thank you to Wessex AHSN for their collaborative support with the training, and to NHS Dorset for hosting the training at Vespasian House, Dorchester

Future dates

Interested in coming to a future session? The planned 2023 training dates are 25 April, 20 June and 28 September. Booking will open soon for the April session, and will be advertised at [Upcoming events – Innovation \(ourdorset.org.uk\)](https://ourdorset.org.uk).



Life Sciences in the Central South Southern Policy Centre Report

The Southern Policy Centre (SPC) is an independent think tank and policy forum for central Southern England, founded in 2014. The SPC work with local authorities, higher and further education, business and environmental organisations to set out the challenges and opportunities of the region.

In the recent report 'Life sciences in the central south', the SPC examines the region's strength in fostering and promoting the life sciences. The report outlines unique assets, expanding facilities and clusters of expertise; highlighting in particular the power that lies in partnership. As stated in the report, "Partnerships ensure that ground-breaking research can be translated into innovation and become part of clinical practice, to the benefit of as many people as possible."

Partnership working lies at the heart of the values of the Dorset Innovation Hub (DIH), and it was great to see the DIH highlighted in the report as a new initiative to support the spread of innovation.

A full copy of the report can be accessed via the DIH website at: [Key Reports & Documents – Innovation \(ourdorset.org.uk\)](http://ourdorset.org.uk)



Attitudes Towards Innovation Survey (ATIS)

What are your thoughts on innovation adoption?

How ready is your organisation when it comes to adopting innovations?

As part of the Dorset Innovation Hub (DIH) evaluation, the Wessex AHSN are currently running a survey to collate current views on innovation adoption.

This short survey (5 to 10 mins) will help the DIH to understand how different attitudes impact innovation adoption and could provide vital learning for those promoting innovation to consider going forward.

Please help the DIH to build this understanding by completing a copy of the survey. [Attitudes Towards Innovation Survey - Dorset Innovation Hub Evaluation \(office.com\)](http://office.com)

All views from all staff across the Dorset ICS are valuable and gratefully received. Information submitted within the survey is anonymous.



Save the date!

Dorset Innovation Hub Summit

Thursday 11 May 2023

09:30 to 16:30

Dorset Museum, Dorchester

The Dorset Innovation Hub is proud to announce the date and location of their first summit. This one-day event is open to all seeking to learn more about the spread and adoption of proven innovation. The summit will include:

- National and local key note speakers
- Innovation adoption case study presentations
- Workshops & hands-on learning
- Networking
- Marketplace stands inc. Dorset ICS organisations and selected healthcare innovation commercial companies

Booking via Eventbrite will open on 3 January 2023.

Any questions about this event? Please contact us at dorsetinnovationhub@nhs.uk.

Dorset Innovation Hub - Summit 2023



The hub's aim is to develop a culture that encourages and supports continuous adaption and adoption of innovation that meets the needs of our population and develops a culture of innovation.

The summit provides an opportunity to empower, celebrate and support people across Dorset; showcasing, networking and includes workshops on, e.g. implementation of innovation, sustainability and evaluation.

Save the date



Community of Practice Event

Learning from Covid 19

Wednesday 14 December 2022

13:00 to 14:30 (Online)

In the Dorset health and care setting, find out how we learnt to innovatively do things differently due to the Covid 19 pandemic.

Listen to local case study presentations covering:

- **CovidCare@Home** – remote and self-monitoring
- **Implementing a front-line response to Covid** – a local authority view
- **Automation Roadmap** – automation solutions to problems posed by Covid

Booking via [Eventbrite](#):



Any queries about this event? Please contact us at dorsetinnovationhub@nhs.uk.



Can't make this date? Join us for the following Community of Practice event on **Tuesday 21 March 2023**. Event details available soon at [Upcoming events – Innovation \(ourdorset.org.uk\)](#)

Contact details:

The Innovation Team provides innovators with advice and hands-on support to adapt, adopt and sustain proven innovation and develop ideas into new services and products that will benefit the Dorset ICS and wider NHS.

If you would have a project that you would like to discuss, or if there is anything in this newsletter that you would like further information on, please do contact us.



dorsetinnovationhub@uhd.nhs.uk



<https://ourdorset.org.uk/innovation/>



Innovation